



Education
Scotland
Foghlam Alba



Education
Scotland
Foghlam Alba

ADES Meeting

Friday 13th March 2020

For Scotland's learners, with Scotland's educators
Do luchd-ionnsachaidh na h-Alba, le luchd-foghlaim Alba

Update from Education Scotland

For Scotland's learners, with Scotland's educators
Do luchd-ionnsachaidh na h-Alba, le luchd-foghlaim Alba

Update from Education Scotland

Chief Inspector report: School Inspection Findings 2018-19 published on Education Scotland website.

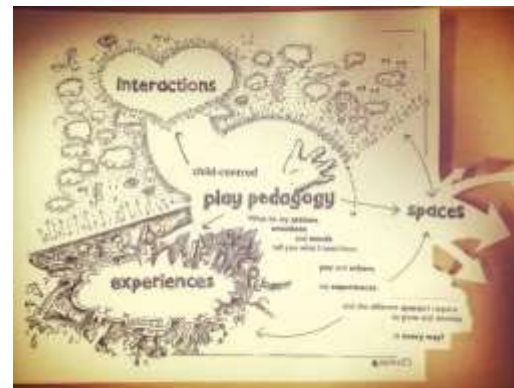
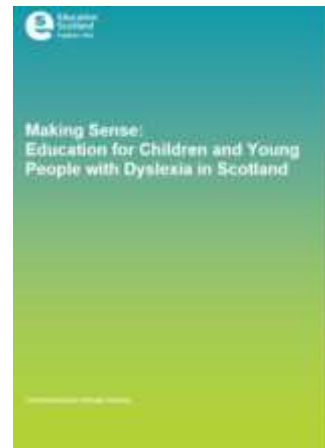
It is first in a series of inspection findings briefings and provides analysis of the evidence gathered through inspections. It comprises a document, interactive presentation and blog.



For Scotland's learners, with Scotland's educators
Do luchd-ionnsachaidh na h-Alba, le luchd-foghlaim Alba

Update from Education Scotland

- Realising the Ambition
- Early Level Play Pedagogy Toolkit
- Making Sense Programme: Final Report 2020
- Scottish Attainment Challenge self-evaluation resource (Draft)
- Evaluation of the Cost of the School Day programme (2018–19)
- Supporting early learning in STEM
- Education Endowment Foundation Update: Guidance Report - Using Digital Technology to Improve Learning
- Education Endowment Foundation Update – Guidance Report: *Improving Behaviour in Schools Evidence Review*

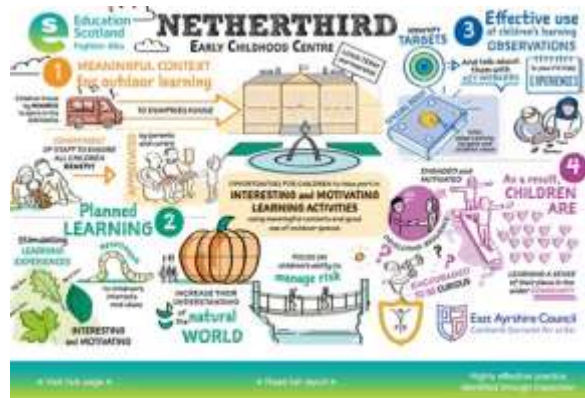


For Scotland's learners, with Scotland's educators
Do luchd-ionnsachaidh na h-Alba, le luchd-foghlaim Alba

Update from Education Scotland

National Improvement Hub Content

- The role of youth work in closing the poverty-related attainment gap - Dundee City Council
- Sketchnote – Springfield Primary - learning, teaching and assessment
- Sketchnote – Netherthird ECC – Motivating learning experiences and contexts
- Sketchnote – St Ninian's High School - Attainment and achievement

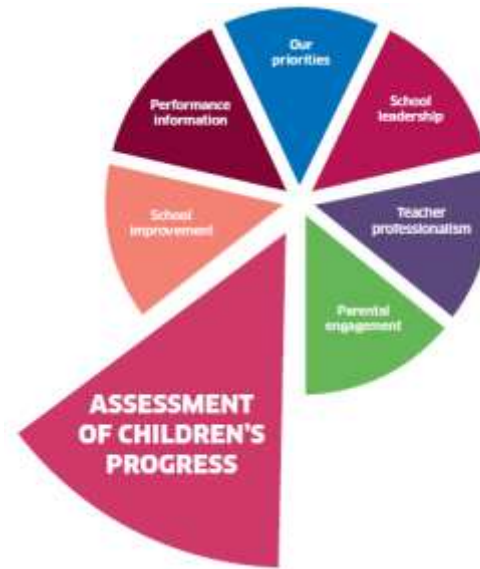
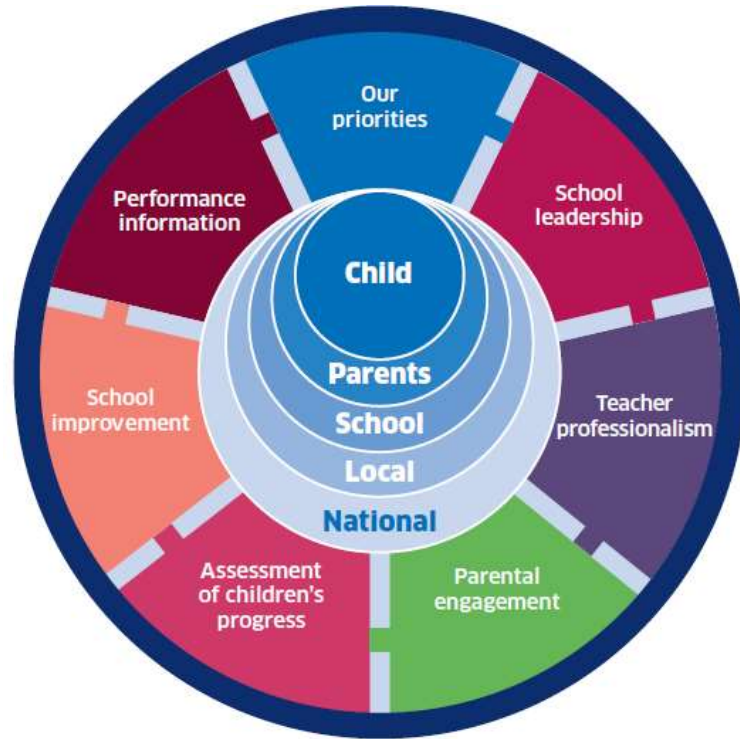




Consultation on NIF Return 2020

For Scotland's learners, with Scotland's educators
Do luchd-ionnsachaidh na h-Alba, le luchd-foghlaim Alba

National Improvement Framework



For Scotland's learners, with Scotland's educators
Do luchd-ionnsachaidh na h-Alba, le luchd-foghlaim Alba

What is the purpose of the NIF return?

- The Scottish Government published a draft National Improvement Framework (NIF) document in September 2015 as a basis for consultation. From the consultation the first annual report was published in January 2016, followed by the NIF Report and Improvement Plan (2017) in December 2016. Subsequently, annual NIF reports have been published in December of 2017, 2018 and 2019, alongside an evidence report which is now published online as an interactive dashboard.
- The NIF sets out a requirement for Education Scotland to report on evidence from a range of sources. Some of this evidence forms part of the interactive evidence dashboard and some of it is used to inform a professional view about progress against six drivers and improvement priorities in the main NIF Report and Improvement Plan. The evidence provided by Education Scotland as part of the NIF in 2019.
- Education Scotland is responsible for collecting data from local authorities in relation to the NIF. Third data collection generates quantitative data in the form of self –evaluations against Quality Indicators and qualitative responses to open questions.

Extracted from the NIF Plan (2019)

NIF Return 2019- Guidance



National Improvement Framework for Scottish Education Education Scotland Data Gathering Exercise 2019

Guidance

There are two worksheets contained in this spreadsheet which need to be completed.

1. Quality Indicators

a) Please check the list of schools carefully. There may be schools that have closed or amalgamated since our records were updated. Please do not delete any schools from the spreadsheet. Use the 'comments' column to let us know if any of these schools are now closed or amalgamated. If you need to add any additional schools, please do so at the bottom of the spreadsheet.

b) For each school please provide evaluations, as at June 2019, against the three following quality indicators from *How Good is our School? 4*:

- 1.3 Leadership of change
- 2.3 Learning, teaching and assessment
- 3.2 Raising attainment and achievement

c) For each school, please provide a rating for each quality indicator on the numerical scale below (these options are in a dropdown list on each cell, please use whole numbers only, any decimals will be rounded down). In most cases this may be lifted from data you already hold centrally or from your schools' standards and quality reports.

6	Excellent
5	Very good
4	Good
3	Satisfactory
2	Weak
1	Unsatisfactory

2. Qualitative

There are a variety of questions contained within this worksheet. Please provide brief comments against all the areas. In most cases a single paragraph will suffice.

Support

If you require any support with completing this spreadsheet, please contact Rachael Murphy at rachael.murphy@educationscotland.gov.scot or on 0131 244 3267.

NIF Return 2019

The 2019 return last year focused on the following areas (exact text)-

- QI 1.3 Leadership of change , QI 2.3 Learning, teaching and assessment and QI 3.2 Raising attainment and achievement

School Name	Primary	Secondary	Special	SIMD	School QI 1.3 Leadership of Change	School QI 2.3 Learning, teaching and assessment	School QI 3.2 Raising attainment and achievement	Additional Comments
				Proportion of pupils who live in 20% most deprived datazones in Scotland	Use numbers 1-6 (see guidance)	Use numbers 1-6 (see guidance)	Use numbers 1-6 (see guidance)	For example, where a school has closed or merged.

- Effectiveness of moderation of teacher judgement of CfE levels in literacy and numeracy.
- Family learning.
- Impact of parents on improvement.
- Progress with the priorities set out in the NIF:
 - *Improvement in attainment, particularly in literacy and numeracy*
 - *Closing the attainment gap between the most and least disadvantaged children*
 - *Improvements in children and young people's health and wellbeing*
 - *Improvement in employability skills and sustained, positive school-leave destinations for all young people*

Getting back information

- Sharing information on areas that are going well (through NIF plan and via NIF Officers)
- Helping to join up where something is going well and areas where it is challenging
- Collating areas requiring national support and feeding into NIF plan.
- What else would you like back ?

Suggested changes to the NIF Return

- Pre populating areas where possible
- More specific questions
- Clearer prompts
- Work count
- Streamlining returns
- What other changes?

Timescales and Support

May –	Return sent out
May –	workshops to support completing the Return
June – Aug-	support from NIF Officers
October-	sharing of good practice

Discussion

- Structure of Return - any changes ?
- Are the questions clear?
- Are the prompts clear ?
- What is the best way to share practice?
- What else would you like back ?
- What further support is needed?

Next Steps

- Finalise the Return
- Create guidance – prompt sheet
- Pilot
- Make any changes as required
- Send out the NIF Return in May



Education Scotland

Denholm House
Almondvale Business Park
Almondvale Way
Livingston EH54 6GA

T +44 (0)131 244 5000

E enquiries@educationscotland.gsi.gov.uk

Foghlam Alba

Taigh Denholm
Pàirc Gnothachais Almondvale
Slighe Almondvale
Baile Dhunlèibhe EH54 6GA

T +44 (0)131 244 5000

E enquiries@educationscotland.gsi.gov.uk

**For Scotland's learners, with Scotland's educators
Do luchd-ionnsachaidh na h-Alba, le luchd-foghlaim Alba**