

Update

Local Government Benchmarking
Framework (LGBF)

Stuart Booker, Fife Council

AEDES Rep – LGBF Project Advisory Board

LGBF – Purpose

- A high-level benchmarking tool designed to support senior management teams and elected members to ask questions ...
- To develop better measures and comparable data as a catalyst for improving services ...
- To provide high-level “can-openers” to help focus questions on why variations in cost and performance are occurring ...

LGBF – Purpose

- A high-level benchmarking tool designed to support senior management teams and elected members to ask questions ...
- To develop better measures and comparable data as a catalyst for improving services ...
- To provide high-level “can-openers” to help focus questions on why variations in cost and performance are occurring ...

LGBF, National Report, Preface

This information is available to all citizens and users of council services so that they can hold councils to account for what is achieved on their behalf ...

LGBF – Strategic Plan

Ongoing development of the LGBF is governed by a 3 year strategic plan for 2017-20, which aims:

- To ensure the framework has relevance, credibility and timeousness
- To better align the LGBF and outcomes
- To demonstrate how the framework is being used to inform decision making, drive improvement, and strengthen public accountability

Local Government Benchmarking Framework (LGBF)

Emerging developments in the framework:

- Strengthening guidance and data
- Thematic reviews
- Introduction of measures for financial sustainability, climate change, and digital transformation

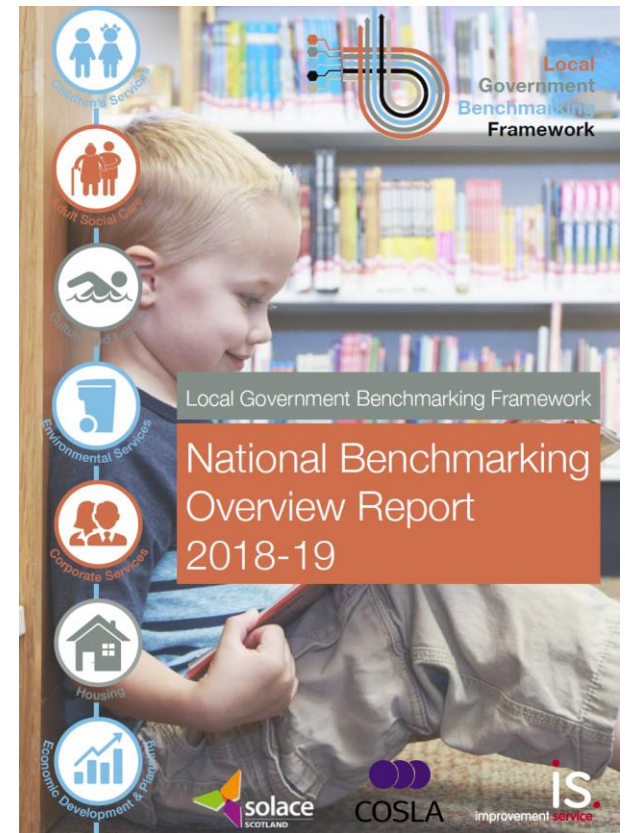
LGBF – Current Measures

	2011-12	2012-13	2013-14	2014-15	2015-16	2016-17	2017-18	2018-19	Improvement Rate 2017-18 to 2018-19	Improvement Rate 2011-12 to 2018-19
% Gaining 5+ Awards at Level 5	51	53	55	57	59	60	62	63	2%	24%
% Gaining 5+ Awards at Level 6	26	27	29	31	33	34	34	35	3%	35%
% Pupils from Deprived Areas Gaining 5+ Awards at Level 5	29	32	34	37	40	41	42	44	5%	52%
% Pupils from Deprived Areas Gaining 5+ Awards at Level 6	10	11	14	14	15	16	16	18	13%	80%

National Report – Key Messages

“Education spending has been largely protected ... compared to other services, with spend growing by 1.5% since 2010/11.

“In the last 12 months, education spend has grown significantly, increasing by 4.5%. This reflects increased costs associated with the recent teacher pay award, access to additional monies via the Scottish Attainment Challenge and Pupil Equity Fund, and the Early Years Expansion programme.”

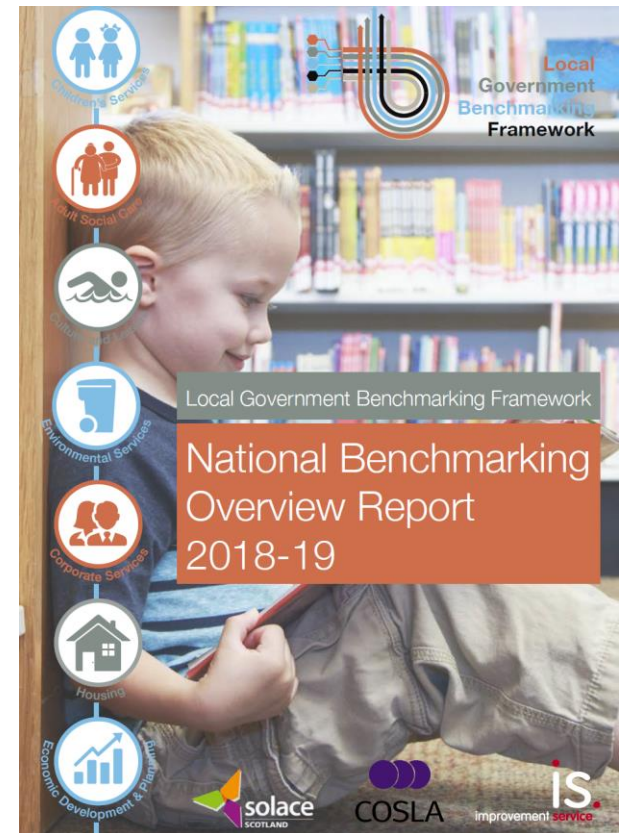


*Updated National report
published in January*

(143 pages)

National report – Key Messages

“Local Government has performed well across the period despite growing pressure on budgets, however, there is evidence that performance, satisfaction, and system capacity are all beginning to show signs of strain. ... Performance improvements gained in recent years are now beginning to slow or decline ”

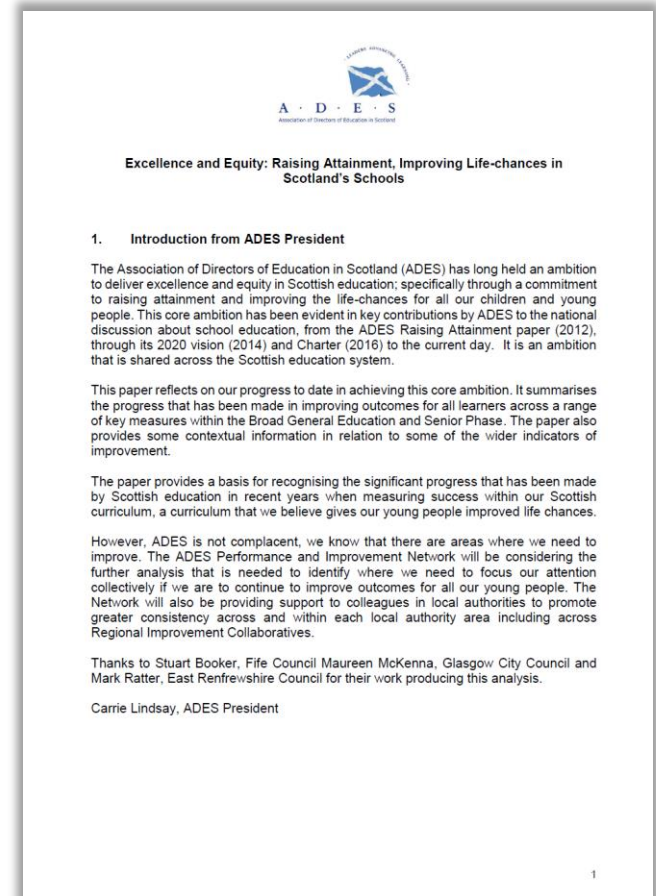


*Updated National report
published in January*

Education – challenges

“Evidencing impact on excellence and equity”

- Recognising improvement
- Reflecting the ethos and purpose of CfE (e.g. parity of esteem)
- Telling the story of the successes of Scottish schools and of CfE
- How the LGBF relates to wider policy developments and media messaging



Request for engagement

Benchmarking meetings form an important element of the LGBF approach, and provide an opportunity for colleagues from each sector to come together and share practice to inform improvement both locally and sector wide.

We would be keen to hear more about the existing networks and opportunities for learning and practice sharing and if/how we might connect in to these.

Questions?

LGBF Project Advisory Board

Role of the ADES rep:

- Representing stakeholder views to SOLACE and the Improvement Service
- Providing “expert” advice to SOLACE and the Improvement Service on service specific issues
- Updating the LGBF Board about national policy developments to support horizon scanning
- Providing a sounding board for critical thinking and discussions with a diverse range of professional experience